



for sale in Terranuova Bracciolini
Penna
€ 650.000
Ref. 1184



200 sq.m. | : 3 | : 3 | : 7

Elegant contemporary villa with swimming pool and large private garden

Immersed in the quiet countryside, yet within easy reach of essential amenities, we offer for sale a refined, recently built detached villa measuring approximately 200 sq m in total. It boasts high-quality finishes and is in like-new condition, just steps from Chianti in an area offering maximum privacy.

The property is predominantly on a single level and welcomes guests through a scenic loggia that spans two sides of the house, perfect for relaxing al fresco. From here, guests enter a spacious and bright living area with an open kitchen and fireplace, designed to offer comfort and elegance in a convivial setting.

The well-distributed sleeping area includes three bedrooms and two bathrooms, including a splendid, generously sized master suite, embellished with double windows and a whirlpool tub.

The basement, internally connected, is designed as a multifunctional and welcoming space: a large open space of approximately 70 square meters houses a second kitchen, dining area, and living room with fireplace and oven, ideal for receptions and social gatherings. Completing the level are an additional bedroom, a guest bathroom, a laundry room, and direct access to a private loggia with storage room.

Outside, the property is surrounded by a well-maintained private garden of approximately 15,000 square meters, ensuring privacy and harmony with the natural landscape. The splendid 11x5 meter swimming pool is the heart of the outdoor



area, flanked by an elegant brick annex with a furnished area for al fresco dining. There is also a utility room and storage space. The property features a private well with water storage and photovoltaic panels producing 10 kilowatts of electricity, which powers the heating and cooling system with a heat pump.

Possibility of separately purchasing adjacent agricultural land, ideal for further expanding the property or for investment purposes.

Distance to the city of art

Florence 45km, Siena 60km, Arezzo 30km, Peretola Airport 60km, Pisa Airport 140km

Certification

: C

Features

Codice: 1184

Motivazione: Sale

Indirizzo: strada Provinciale della penna

CAP: 52028

Comune: Terranuova Bracciolini

Zona: Penna

Totale_mq: 200 sq.m.

camere: 3

bagni: 3

Locali: 7



Colli toscani

piazza serristori 20 - Figline e Incisa Valdarno (FI) - 055959151
info@colli-toscani.com - <https://www.colli-toscani.com/en>
VAT 02301980484



Colli toscani

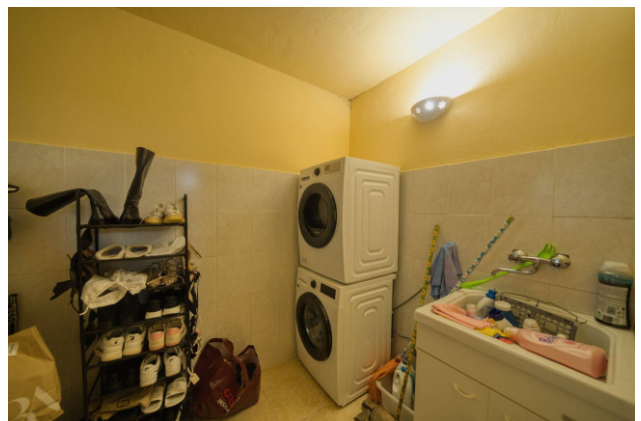
piazza serristori 20 - Figline e Incisa Valdarno (FI) - 055959151
info@colli-toscani.com - <https://www.colli-toscani.com/en>
VAT 02301980484



Colli toscani

piazza serristori 20 - Figline e Incisa Valdarno (FI) - 055959151
info@colli-toscani.com - <https://www.colli-toscani.com/en>
VAT 02301980484







Colli toscani

piazza serristori 20 - Figline e Incisa Valdarno (FI) - 055959151
info@colli-toscani.com - <https://www.colli-toscani.com/en>
VAT 02301980484

