



for sale in Figline e Incisa Valdarno

Gaville

€ 1.200.000

Ref. 1064



1.500 sq.m. | : 3 | : 20 | : 35

Tuscany, near Greve Chianti, Gaville area, interesting 18th century farmhouse complex in a beautiful panoramic hilly area with excellent sun exposure for a total of 1500 m2 and arranged in five real estate units, some of which have been renovated and the rest have been renovated in the rough with roofs, attics and facades already redone.

First unit:

central the largest still preserves the ancient charm. Arranged on three levels, ground floor, first floor we find a large living room with adjoining dining room with fireplace and kitchen hallway, three bedrooms, two bathrooms and living area.

Second Unit

born to serve the swimming pool arranged as a recreational area with oven and kitchen, this one already renovated to be modernized.

The other three units

The properties are in their raw state as already mentioned with the attics and roofs redone and still need to be divided and adapted into residential units.



The property includes a swimming pool, an annex for agricultural equipment and 22 hectares of land intended for olive groves, woods and arable land.

Distances to cities of art
Florence about 20 km
Greve in Chianti about 12 km
Siena about 45 km
Arezzo about 35 km
Peretola Airport 45 km

Position

The property is located halfway between the town of Figline Valdarno and Greve in Chianti, from the property you can easily access the Chianti Senese area, distance from Radda in Chianti about 15 km in fact the property has a strong tourist vocation can be easily divided into apartments. very touristic area with numerous accommodation facilities that attract tourists from all over

Certification

: G
.....

Features

Codice: 1064	Motivazione: Sale
Indirizzo: via di gaville	CAP: 50063
Comune: Figline e Incisa Valdarno	Zona: Gaville
Totale_mq: 1.500 sq.m.	camere: 20
bagni: 3	Locali: 35



Colli toscani

piazza serristori 20 - Figline e Incisa Valdarno (FI) - 055959151
info@colli-toscani.com - <https://www.colli-toscani.com/en>
VAT 02301980484

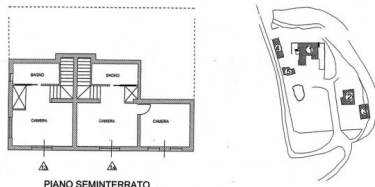
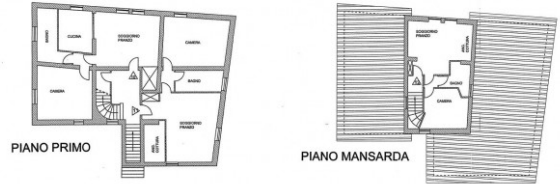
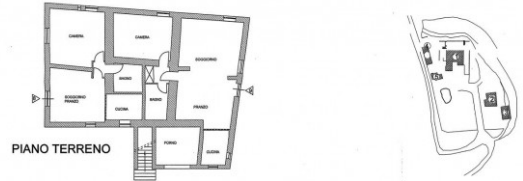
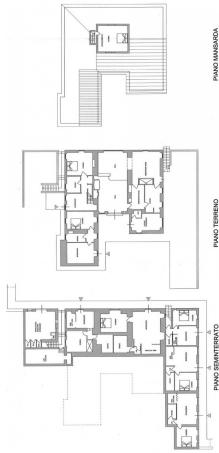




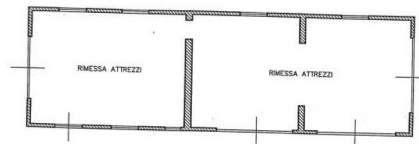




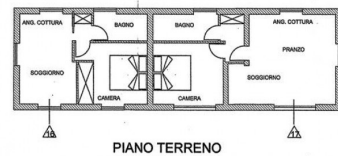
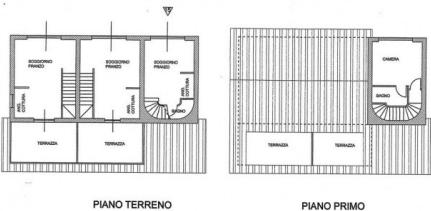
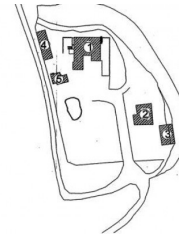
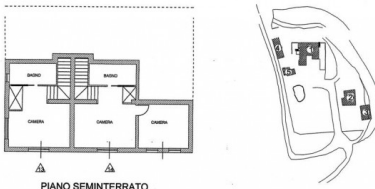
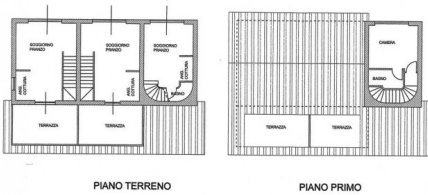




STATO ATTUALE



PIANO TERRENO

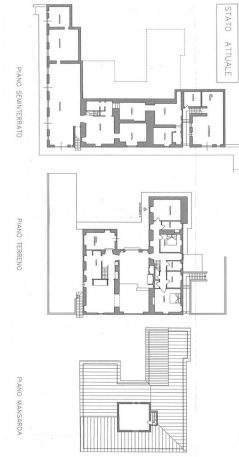
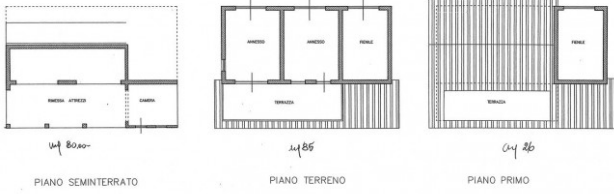


PIANO TERRENO

Colli toscani

piazza serristori 20 - Figline e Incisa Valdarno (FI) - 055959151
 info@colli-toscani.com - https://www.colli-toscani.com/en
 VAT 02301980484

STATO ATTUALE



STATO ATTUALE

