



**for sale in Poppi**  
**€ 650.000**  
**Ref. 499**



**532 sq.m. | : 3 | : 5 | : 50**

Casentino is the name of the upper Arno valley with Arno origin, a closed valley east of Florence, accessible "at ground level" only from Arezzo along the Arno, otherwise only through one of the numerous passes. It is one of the most beautiful Tuscan valleys, rich in history, natural beauty and vast woods.

The village of the former Abbey of Strumi in Casentino, rich in history, stands on the right bank of the Arno. Strumi is an ancient Benedictine abbey founded at the end of the 10th century by Count Teugrimo dei Guidi. It was the goal of Frederick Barbarossa, who appointed the abbot of Strumi as counter-pope and gave him the name Callixtus III. In the plain called Campaldino, not far from the abbey, the historic battle took place in 1289 between the Guelphs of Florence and the Ghibellines of Arezzo, in which Dante Alighieri participated as a young knight.

The former abbey building has three floors. The basement contains cellars and warehouses. The first floor is accessible via two curved external stairs and is divided into a large living room with kitchen and fireplace, two bedrooms and a bathroom. The second floor is accessed from a ground level entrance on the north side of the building and is located in an anteroom from which the stairs lead to the living level with an anteroom, a large living room with kitchen and fireplace, 3 bedrooms bedroom and two bathrooms.



Part of the property for sale are an apartment of approximately 50m<sup>2</sup> with one bedroom and bathroom and is a 2-storey utility building (approximately 200m<sup>2</sup>), which can be converted into additional living space.

From Strumi it is possible to make excursions to suggestive places such as La Verna di San Francesco, the monastery of Camaldoli, the ancient castles of Poppi, Romena, Porciano and San Niccolò and the Romanesque churches of Socana, Romena, San Martino a Vado, Montemignai.

Distances: Poppi 2 km, Arezzo 40 km, Florence 55 km, Siena 100 km, Perugia 130 km.

As OPTIONS can be acquired

- 1) M3421 two adjacent houses in the village with 6 apartments and large garage, as well as
- 2) approximately 9.45 hectares of adjacent agricultural land, price negotiable.

## Features

Codice: 499

Motivazione: Sale

Indirizzo: Via Becarino

CAP: 52014

Comune: Poppi

Totale\_mq: 532 sq.m.

camere: 5

bagni: 3

Locali: 50



**Colli toscani**

piazza serristori 20 - Figline e Incisa Valdarno (FI) - 055959151  
info@colli-toscani.com - <https://www.colli-toscani.com/en>  
VAT 02301980484

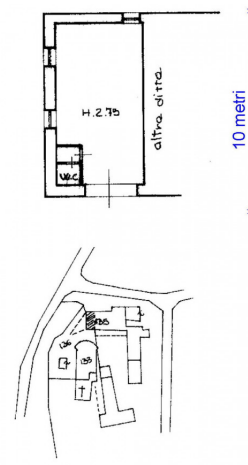
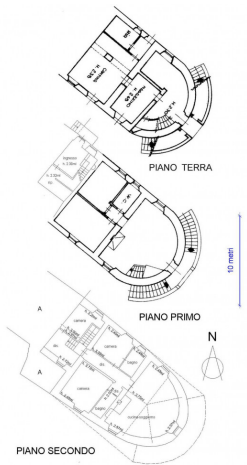












**Colli toscani**

piazza serristori 20 - Figline e Incisa Valdarno (FI) - 055959151  
 info@colli-toscani.com - <https://www.colli-toscani.com/en>  
 VAT 02301980484